

Learning Communities

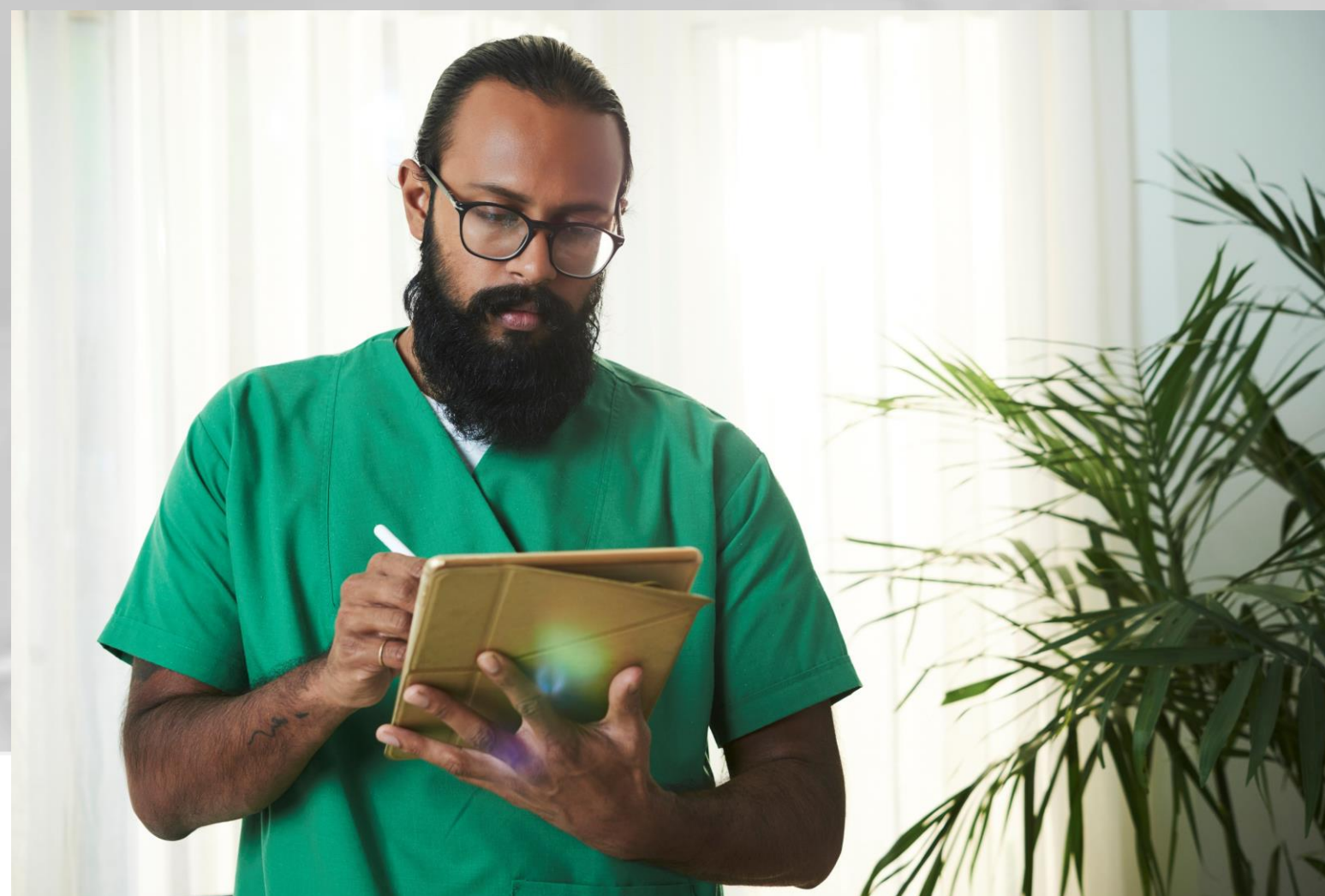
Medical school learning communities traditionally serve as a way to allow smaller groups of student to learn and serve the community together, through curricular and extra curricular activities, while supporting each other and growing both professionally and personally. Roseman COM's six Learning Communities will be unique among medical schools, as they will integrate communities of medical practice in GENESIS with communities of study.

ROADRUNNER 1



Our practice target community is experiencing unprecedented rates of HIV, so RR1 has launched a home-based patient education campaign.

ROADRUNNER 2



Diabetes education is important in our target community, so RR2 is working with nutritionists to teach about healthy diets.

ROADRUNNER 3



Families with children of all ages in our practice community are benefiting from RR3's collaborative offerings of tutoring and STEM initiatives.

ROADRUNNER 4



RR4's education about mental health is allowing members of our practice community to feel more comfortable when seeking out mental health services.

ROADRUNNER 5



Gun safety is priority of our target community, so RR5 is working with police to provide education and safety locks for our households.

ROADRUNNER 6



RR6 is working on remote monitoring solutions for our many household members with hypertension.